



Livermore Area
Recreation & Park District
An independent special district

Donation Opportunities: a campaign for individual & corporate donors to support LARPD



DONATION OPPORTUNITIES

GENERAL DONATION TO LARPD FOUNDATION

Significant donations are recognized on the engraved Giving Tree at the Robert Livermore Community Center (RLCC). Donations for specific programs or items may also be recognized on an engraved plaque for an additional cost, if applicable.

AQUATICS

- Aquatics Program Low-Income Scholarships– any amount
- Kickboards \$10 each
- Water Exercise Equipment \$25-\$75 per item
- Lifeguard Rescue Tubes \$50 each
- Bag Valve Breathing Mask \$50 each
- Lifeguard Parkas \$100 each
- Water Polo Caps \$500 per set of 52– any amount
- RLCC Swim Pool Slide Shade Structure \$12,000
- May Nissen Swim Center Shade Structure \$65,000
- Solar and Photovoltaic Power for RLCC Aquatics



PARKS

Costs includes installation/planting

- Tree: 15 gallon \$250, 24" box \$400, 48" box \$1,400
- Trash/Recycling Receptacles \$1,200- \$1,800 each, depending on style
- Bronze Animal Footprints for New Concrete Pathways \$1,500
- Park Bench: \$2,100- \$2,650 each, depending on style



- Barbecue Grill: small \$2,500, large \$6,500
- Park Tables \$3,200 each
- Trees for Robertson Park's New Respite Area, Trail and Playground \$5,000
- Drinking Fountains \$5,000- \$5,750 each, depending on style
- Surface Patterning with Acoustic Features (musical notes, animal sounds) \$6,000



POLICE ACTIVITIES LEAGUE FOR MIDDLE SCHOOL (PAL)

- Digital Cameras \$225 each
- Digital Video Cameras \$500 each
- PAL/Youth Garden
 - Gardening Tools (shovels, hoses, buckets, gloves, etc.)\$200
 - Seeds/Plants \$300
 - Soil \$500
 - Wood for Planter Boxes \$1,000
 - Chain Link Fencing \$2,000



PRESCHOOL AND TINY TOTS

- Tiny Tot Scholarship \$100 per month, \$900 per school year– any amount
- Pre-School Scholarship \$185 per month, \$1,755 per school year– any amount

YOUTH CLASSES AND PROGRAMS

- Scholarships for Youth Programs and Classes– any amount



ROBERT LIVERMORE COMMUNITY CENTER (RLCC)

- Flat Screen TVs with Built-In DVD Players, \$500 each
- Security Cameras and Closed Circuit TV \$2,300
- LED Sign for the Front of the RLCC \$150,000
- Emergency Electrical Generator \$250,000
- Parking Lot Connector Road Project \$275,000



SPECIAL EVENTS

- Volunteer Recognition Event: Table Centerpieces, Decorations, Gifts for Volunteers, Food and Drink– any amount
- Earth Day Supplies: Clean-Up Supplies, Food and Drink for Volunteers, Trees, Seeds– any amount
- Emergency Survival Kits for Low-Income Families and Seniors \$10 each– any amount
- Super Football Party: Prizes/Auction Items, \$25 value and up
- Easter Bunny Costume \$300
- Performers for Children's Fair \$300–\$600 each
- 4th of July Fireworks and Entertainment \$500– \$10,000
- Tables and Chairs \$900 per set
- Parking Wheelstops \$3,000
- Portable Radio Set \$12,500



SENIOR SERVICES CENTER (SSC)

- Gift Baskets/Door Prizes for Special Events– any amount
- Gift Cards for Holiday Projects– any amount
- Dial-A-Ride Tickets (approx. \$8 roundtrip)– any amount
- Senior Program Low-Income Scholarships– any amount
- Dinner Gift Certificates for 2– any amount
- Tickets to plays, symphony, movie theater– any amount
- Wine for Special Events and Gift Baskets– any amount
- Gas Cards for Seniors \$50 per card– any amount
- Monthly Spectrum Meal Passes \$40 per month– any amount
- DVDs and Music CDs \$10–\$25 each (request list in SSC office)
- Flowers for Senior Birthdays/Anniversaries \$25 per month
- 200 Cloth Napkins (White) \$115
- 200 Cloth Napkins (Color) \$115
- Entertainment Sponsors \$150–\$500 per event
- Annual Movie License \$160
- Multi-Disc CD Player \$200

SSC (CONTINUED)

- SSC Prime Time Newsletter Printing Costs
 - 2-month edition \$700
 - 3-month edition \$900
- Sponsor Christmas Lights Tour \$1,000
- SSC Color Brochure Printing Costs \$1,100
- Sponsor a Wine and Dessert Evening for Seniors \$2,000
- Sponsor Family Caregiver's Pancake Breakfast \$2,500
- Chairs with Arms \$3,000

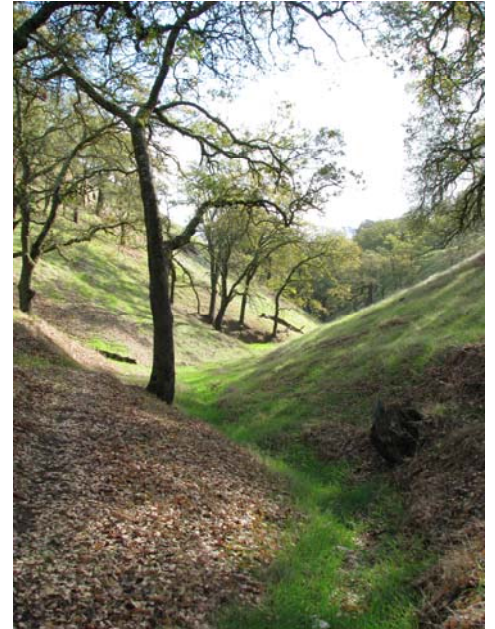
OPEN SPACE

- Camp Shelly
 - Sports/Recreation Equipment- any amount
 - Reference Books- any amount
 - Storage Containers \$30 each
 - Bear Pepper Spray \$65 per year
 - Hand-Cranked Ice Cream Maker \$350
 - Animal-Resistant Refuge Containers \$900-\$1,300 each
 - Animal-Resistant Storage Containers \$1,200 each
- Outdoor Recreation/Nature Programs
 - Puppets- any amount
 - Program Supplies (Archaeology, Native California Indian, Nature, Wildlife Programs, etc.)- any amount
 - Junior Ranger Program Supplies \$500- any amount
 - Scholarships for School Classes- any amount
 - Scholarships for Youth Nature Programs- any amount
 - Tools (Mallets, Froes) \$35-\$40 each
 - Replica Animal Skulls for Programs \$50-\$200 each
 - Parachute (large) \$150
 - Apple Peeler \$150
 - Wooden Kegs/Barrels \$275/\$335
 - Large Camp Pots and Pans Set \$350
 - Ice Maker for Summer Camp \$350
 - Fruit Press \$600
 - Sun Shelter \$45,000
- Open Space/Rangers
 - Recreation Equipment/Supplies \$150- any amount
 - Books/Magazines for Ranger Library- any amount
 - Magnifying Viewer for Pond Programs \$40
 - Professional Flashlights \$100 each



OPEN SPACE (CONTINUED)

- Hip Waders \$150 each
- Binoculars \$225 each
- Historic Maps and Photos \$300-\$750
- Wildlife Monitoring Camera \$450
- Digital Camera \$500
- Hand Weather Station \$500
- File Cabinets and Storage \$550-\$1,200
- Spotting Scope with Tripod \$900
- Resin Visual Aid of Animal Tracks Panel \$900
- Interpretive Panels \$1,200-\$2,000 depending on size
- Night-Vision Goggles \$1,400 each
- Colony Bat Box \$1,600 each
- Portable Generator \$2,000
- Signs for Ravenswood Apple Trees \$2,500
- Computer Equipment \$2,500
- Native Butterfly Garden (Plants and Plaques) \$2,800
- Professional Weather Station \$3,000
- Annual Open Space Calendar Printing Costs \$3,800
- Telescope \$4,000
- Public Art \$5,000-\$20,000
- Informational Brochure Printing Costs \$5,250
- Skid Sprayer for Utility Vehicles \$5,750
- Geographic Info System Software and Hardware \$6,000
- Vista Point Rest Area (Bench, Stonewall) \$10,000-\$15,000
- Utility Vehicle \$14,000
- Three Map Panels and New Kiosk \$16,000
- Digital Radio System \$80,000



SPORTS

- Sports Program Low-Income Scholarships– any amount
- Sports Camp T-Shirts– any amount
- Sports Camp Equipment– any amount
- Awards/Medals– any amount
- Randy Johnson Junior Giants Field
 - Team Parties \$100– any amount
 - Hand Tools for Field Maintenance \$200
 - Field Chalk \$250
 - Baseball Field Soil \$750
 - Youth Pitching Mound \$750



LARPD FOUNDATION

The LARPD Foundation is a 501 (c)(3) nonprofit foundation supporting Livermore area recreation and parks, nature programs, special events, Ravenswood Historic Site and community beautification efforts. With your generosity, the Foundation has supported the community in countless ways including purchasing defibrillators for medical emergencies and providing scholarships to low-income program participants.

The Foundation's role has become increasingly important in recent years. Since 1992, more than \$70 million of your taxes intended for recreation and parks have been shifted by the State to the Education Revenue Augmentation Fund. This represents a loss of over 48 percent of LARPD's annual tax revenue, now over \$7 million per year.

To Make A Donation

To donate, simply write a check payable LARPD Foundation.

Mail or deliver check to :

LARPD

Attn: Sandra Kaya

4444 East Avenue

Livermore, CA 94550

Specify the intent of your donation (i.e. Aquatics- Lifeguard Parka, Seniors, Teens, or Robertson Park-Park Bench) by writing it in the check's memo line. Unspecified donations will be placed in the General Donation fund. Write "Endowment Fund" if you would like your donation to be used for needed repairs and renovations, scholarships for children, youth, and seniors, and improvements to parks, facilities, and programs.

If you would like to make a donation in honor of a loved one or for any donation questions, please contact Sandra Kaya at 925-373-5786 or skaya@larpd.dst.ca.us.

Although costs of items have been specified, donations of any amount are welcome and greatly appreciated.